

# HYDROSTATIC STEERING UNITS



**NIMCO**  
**NIMCO**  
**NIMCO**  
**CONTROLS**

RELIABILITY FROM QUALITY

HYDROSTATIC STEERING UNIT SERIES NHSU 1 / 2 / 3

PAGE 3

HYDROSTATIC STEERING UNIT SERIES NHSUS 1 / 2 / 4

PAGE 6

HYDROSTATIC STEERING UNIT SERIES NHSU / NHSUS 5(T)

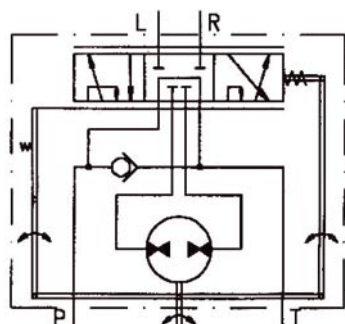
PAGE 9

**APPLICATION**

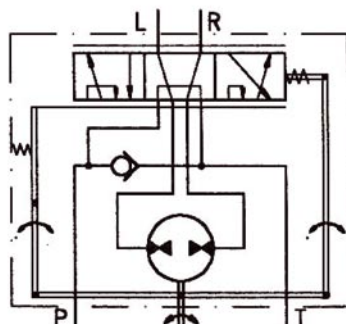
For the use of steering low speed vehicles, extensively used on such as forklifts, tractors, construction equipment, rudders of a ship, mowers, mining and industrial positioning equipment.

**DESCRIPTION OF UNIT NHSU**

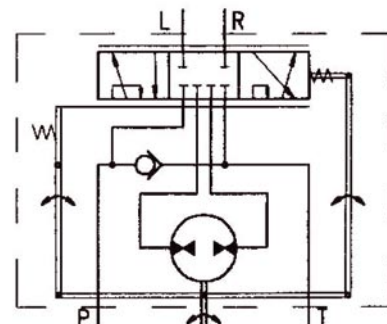
The NHSU Power Steering Unit can be used to control the power steering force with a very light operating force. It is safe, reliable and smooth in both the function and operation,. This is achieved with the hydraulic power from the vehicles pressure system entering the pressure port (P) of the NHSU unit and being directed to the steering cylinders through the tank posts L (left) and R (right) by turning the input shaft in either direction. Return flow from each cylinder is through the tank port (T). The NHSU unit contains a metering pump, rotary positioning valves and check valves. (see below hydraulic circuit diagrams).



**NHSU.../1 VERSION -1**  
 "OPEN CENTER"  
 NON-LOAD REACTION



**NHSU.../2 VERSION -2**  
 "OPEN CENTER"  
 LOAD REACTION



**NHSU.../3 VERSION -3**  
 "CLOSED CENTER"  
 NON-LOAD REACTION

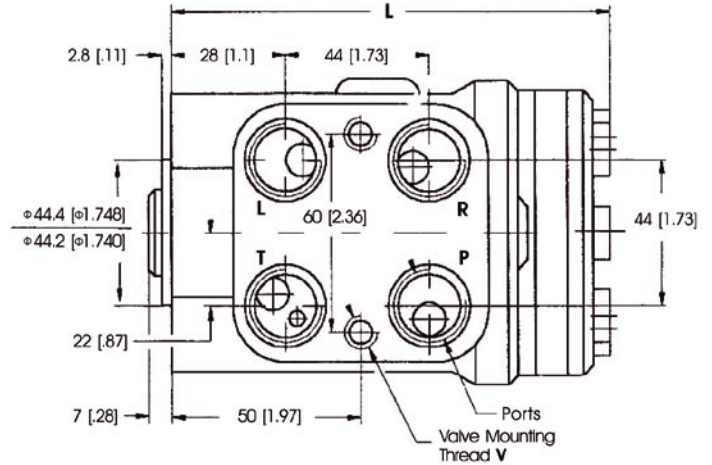
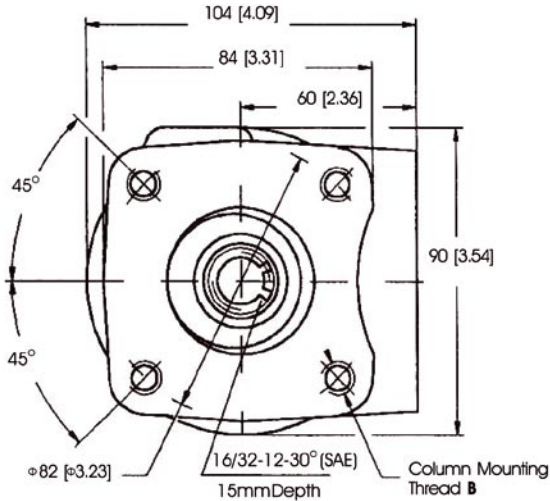
**SPECIFICATION**

Parameters	Type												
	NHSU 50	NHSU 63	NHSU 80	NHSU 100	NHSU 125	NHSU 160	NHSU 200	NHSU 250	NHSU 315	NHSU 400	NHSU 500	NHSU 630	NHSU 800
Version	1/2/3	1/2/3	1/2/3	1/2/3	1/2/3	1/2/3	1/2/3	1/2/3	1/2/3	1/2/3	1/3	1/3	1/3
Displacement cc/rev (cu. in)	50.8 (3.1)	62.9 (3.8)	79.8 (4.9)	99.6 (6.1)	124.5 (7.6)	159.6 (9.8)	199.4 (12.2)	249.2 (15.2)	316.5 (19.4)	399.7 (24.4)	499.0 (30.6)	629.5 (38.5)	799.2 (48.9)
Rated Flow l/min (gpm)	5 (1.3)	6 (1.6)	8 (2.1)	9 (2.4)	11 (2.9)	12 (3.2)	17 (4.5)	24 (6.3)	30 (7.9)	40 (10.6)	50 (13.3)	63 (16.8)	80 (21.3)
Rated Pressure bar (PSI)	160 (2320)											140 (2030)	
Max. Pressure in Line T bar (PSI)	20 (290)												
Max. Torque-Powered Nm ( lb.-in.)	5 (44)						8 (70)						
D Type Weight kg (lb)	5.75 (12.68)	5.82 (12.83)	5.89 (12.99)	5.96 (13.14)	6.1 (13.45)	6.3 (13.89)	6.5 (14.33)	6.73 (14.98)	7.1 (15.65)	7.5 (16.53)	8.38 (18.47)	9.43 (20.79)	10.89 (24.01)
E Type Weight kg (lb)	6.04 (13.31)	6.11 (13.47)	6.18 (13.62)	6.27 (13.82)	6.4 (14.11)	6.6 (14.55)	6.79 (14.97)	7.02 (15.48)	7.39 (16.29)	7.79 (17.17)	8.67 (19.11)	9.72 (21.43)	11.18 (24.65)
D Type Dimension L mm (in.)	130 (5.12)	132 (5.2)	134 (5.28)	137 (5.39)	140 (5.51)	145 (5.71)	150 (5.91)	156 (6.14)	166 (6.54)	176 (6.93)	189 (7.44)	208 (8.19)	228 (8.98)
E Type Dimension L mm (in.)	140 (5.51)	142 (5.59)	144 (5.67)	146 (5.75)	149 (5.87)	154 (6.06)	159 (6.26)	165 (6.5)	175 (6.89)	185 (7.28)	198 (7.80)	217 (8.54)	237 (9.33)

**D TYPE**

**DIMENSIONS AND MOUNTING DATA**

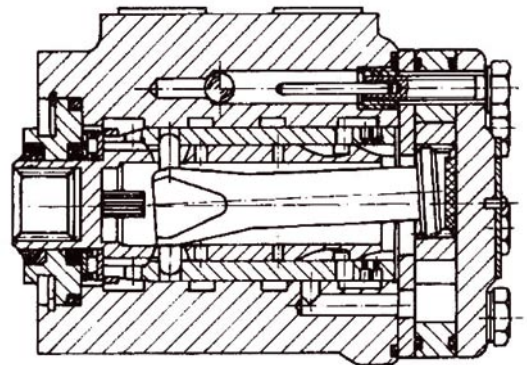
(INCH) SHOWN IN BRACKETS [ ]



**THREAD PORTS**

Code	Ports – P, T, R, L Thread	Column Mounting Thread - B	Valve Mounting Thread - V
-	G 1/2 17 mm depth	4 x M10 x 1.5 16 mm depth	M10 x 1 16 mm depth
GA*	G 3/8 17 mm depth	4 x M10 x 1.5 16 mm depth	M10 x 1 16 mm depth
U	3/4 – 16UNF O-ring 17 mm depth	4 x 3/8 – 16UNC 0.63 [16] depth	2 x 3/8 – 24UNF 0.63 [16] depth
UA*	9/16 – 18UNF O-ring 17 mm depth	4 x 3/8 – 16UNC 0.63 [16] depth	2 x 3/8 – 24UNF 0.63 [16] depth
M	M22 x 1.5 17 mm depth	2 x M10 x 1.5 16 mm depth	M10 x 1 16 mm depth

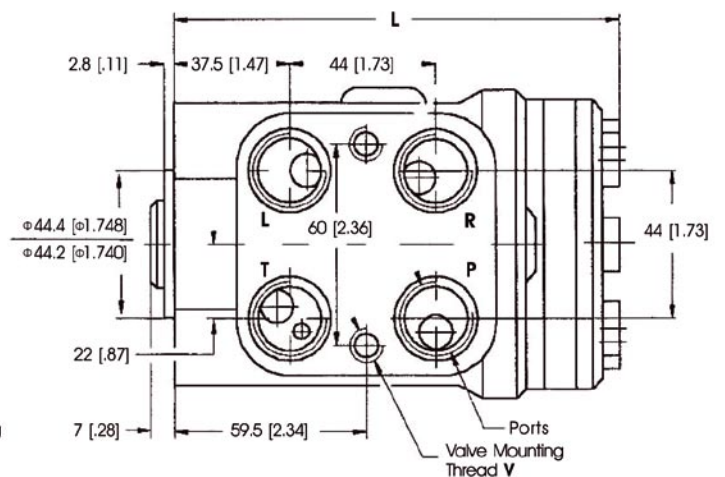
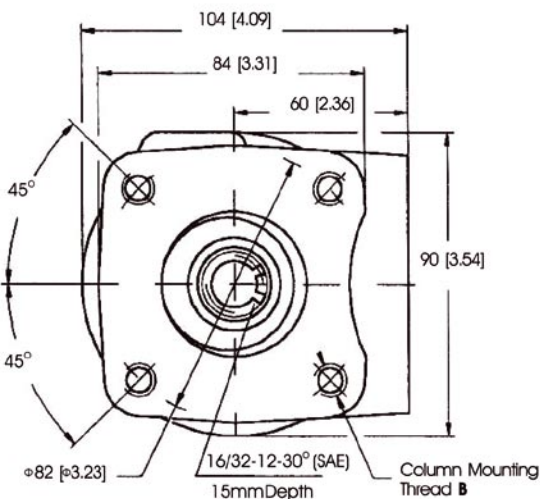
\* These threads are for displacements from HSU50 to HSU160 only.



**E TYPE**

**DIMENSIONS AND MOUNTING DATA**

(INCH) SHOWN IN BRACKETS [ ]



**ORDERING INFORMATION**



**Pos. 1**

**DISPLACEMENT CODE**

50	-	50.8cc / 3.1 [in.3/r]
63	-	62.9cc / 3.8 [in.3/r]
80	-	79.8cc / 4.9 [in.3/r]
100	-	99.6cc / 6.1 [in.3/r]
125	-	124.5cc / 7.6 [in.3/r]
160	-	159.6cc / 9.8 [in.3/r]
200	-	199.4cc / 12.2 [in.3/r]
250	-	249.2cc / 15.2 [in.3/r]
315	-	316.5cc / 19.4 [in.3/r]
400	-	399.7cc / 24.4 [in.3/r]
500	-	499.0cc / 30.6 [in.3/r]
630	-	629.5cc / 38.5 [in.3/r]
800	-	799.2cc / 48.9 [in.3/r]

**Pos. 2**

**VERSIONS**

1	-	"Open Center - Non Load Reaction"
2	-	"Open Center - Load Reaction"
3	-	"Closed Center - Non Load Reaction"

**Pos. 3**

**CODE**

Omit	-	BSPP G 1/2
GA	-	BSPP G 3/8
U	-	3/4 - 16 UNF "O" Ring
UA	-	9/16-18 UNF "O" Ring
M	-	Metric

**Pos. 4**

**TYPE**

D	-	D Type
E	-	E Type

**Pos. 5**

**DESIGN SERIES**

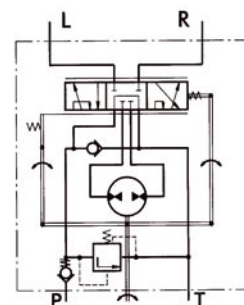
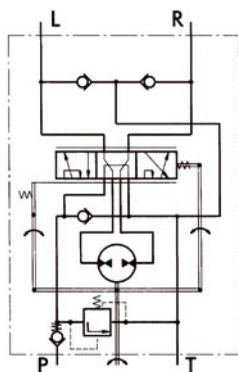
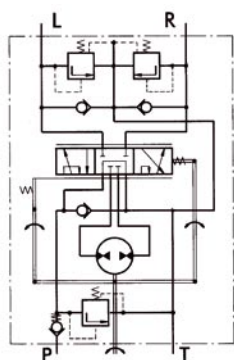
Omit	-	Factory use only
------	---	------------------

**APPLICATION**

For the use of steering low speed vehicles, extensively used on forklifts, tractors, construction equipment, rudders of a ship, mowers, mining and industrial positioning equipment.

**DESCRIPTION OF UNIT NHSUS**

The NHSU Power Steering Unit can be used to control the power steering force with a very light operating force. It is safe, reliable and smooth in both the function and operation,. This is achieved with the hydraulic power from the vehicles pressure system entering the pressure port (P) of the NHSUS unit and being directed to the steering cylinders through the tank posts L (left) and R (right) by turning the input shaft in either direction. Return flow from each cylinder is through the tank port (T). The NHSUS unit contains a metering pump, rotary positioning valves and check valves. (see above hydraulic circuit diagrams).



**NHSUS.../1 VERSION -1**

“OPEN CENTER”  
 NON-LOAD REACTION  
 WITH BUILT-IN CHECK  
 AND RELIEF VALVES

**NHSUS.../2 VERSION -2**

“OPEN CENTER”  
 LOAD-REACTION  
 WITH BUILT-IN CHECK  
 AND RELIEF VALVES

**NHSUS.../4 VERSION -4**

“OPEN CENTER”  
 NON-LOAD REACTION  
 WITH BUILT-IN CHECK  
 AND RELIEF VALVES

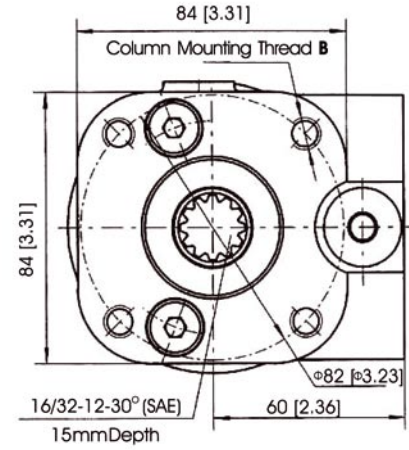
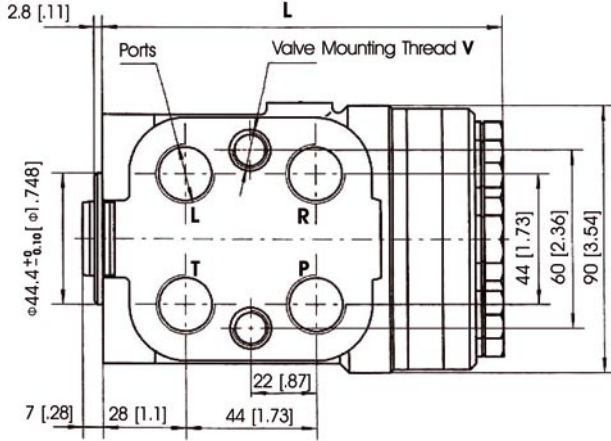
**SPECIFICATION**

Parameters	Type									
	NHSUS 50	NHSUS 63	NHSUS 80	NHSUS 100	NHSUS 125	NHSUS 160	NHSUS 200	NHSUS 250	NHSUS 315	NHSUS 400
Version	1/2/4	1/2/4	1/2/4	1/2/4	1/2/4	1/2/4	1/2/4	1/2/4	1/2/4	1/2/4
Displacement cc/rev (cu.in)	50.8 (3.1)	62.9 (3.8)	79.8 (4.9)	99.6 (6.1)	124.5 (7.6)	159.6 (9.8)	199.4 (12.2)	249.2 (15.2)	316.5 (19.4)	399.7 (24.4)
Rated Flow l/min (gpm)	5 (1.3)	6 (1.6)	8 (2.1)	9 (2.4)	11 (2.9)	12 (3.2)	17 (4.5)	24 (6.3)	30 (7.9)	40 (10.6)
Rated Pressure bar (PSI)	160 (2320)									
Relief Valve Pressure Setting bar (PSI)	80 (1160)		100 (1450)	120 (1740)	140 (2030)	160 (2320)				
Shock Valve Pressure Setting bar (PSI)	140 (2030)		160 (2320)	180 (2610)	200 (2900)	220 (3190)				
Max. Cont. Pressure in Line T bar (PSI)	25 (360)									
Max. Torque-Powered Nm (lb.-in.)	6 (53)									
D Type Weight kg (lb)	5.75 (12.68)	5.82 (12.83)	5.89 (12.99)	5.96 (13.14)	6.1 (13.45)	6.3 (13.89)	6.5 (14.33)	6.73 (14.98)	7.1 (15.65)	7.5 (16.53)
E Type Weight kg (lb)	6.04 (13.31)	6.11 (13.47)	6.18 (13.62)	6.27 (13.82)	6.4 (14.11)	6.6 (14.55)	6.79 (14.97)	7.02 (15.48)	7.39 (16.29)	7.79 (17.17)
D Type Dimension L mm (in.)	130 (5.12)	132 (5.2)	134 (5.28)	137 (5.39)	140 (5.51)	145 (5.71)	150 (5.91)	156 (6.14)	166 (6.54)	176 (6.93)
E Type Dimension L mm (in.)	140 (5.51)	142 (5.59)	144 (5.67)	146 (5.75)	149 (5.87)	154 (6.06)	159 (6.26)	165 (6.5)	175 (6.89)	185 (7.28)

**D TYPE**

**DIMENSIONS AND MOUNTING DATA**

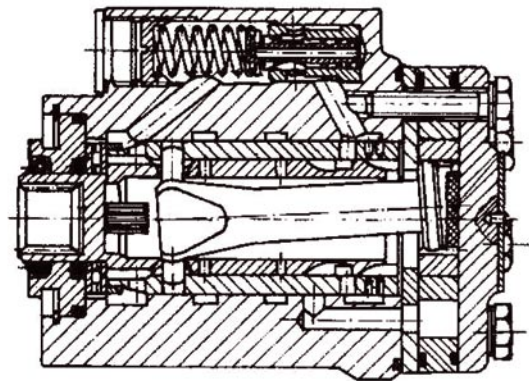
(INCH) SHOWN IN BRACKETS [ ]



**THREAD PORTS**

Code	Ports – P, T, R, L Thread	Column Mounting Thread - B	Valve Mounting Thread - V
-	G 1/2 17 mm depth	4 x M10 x 1.5 16 mm depth	M10 x 1 16 mm depth
GA *	G 3/8 17 mm depth	4 x M10 x 1.5 16 mm depth	M10 x 1 16 mm depth
U	3/4 – 16UNF O-ring 17 mm depth	4 x 3/8 – 16UNC 0.63 [16] depth	2 x 3/8 – 24UNF 0.63 [16] depth
UA *	9/16 – 18UNF O-ring 17 mm depth	4 x 3/8 – 16UNC 0.63 [16] depth	2 x 3/8 – 24UNF 0.63 [16] depth
M	M22 x 1.5 17 mm depth	2 x M10 x 1.5 16 mm depth	M10 x 1 16 mm depth

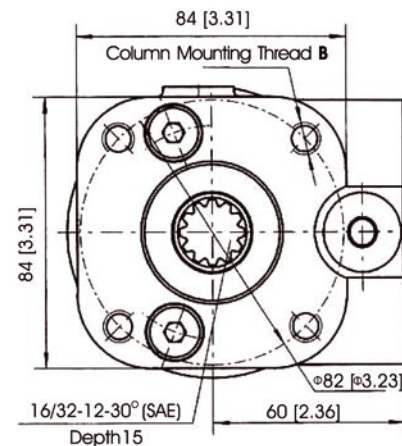
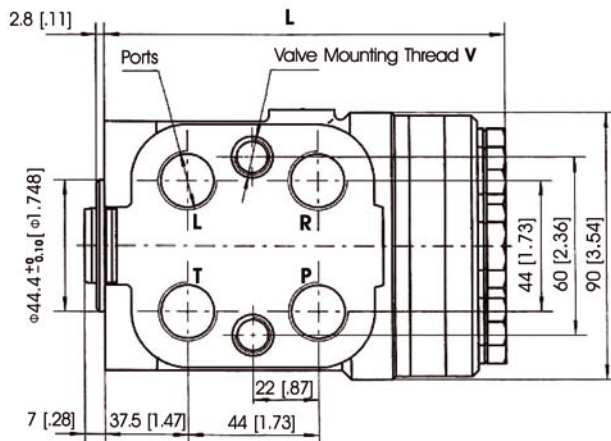
\* These threads are for displacements from HSUS50 to HSUS160 only.



**E TYPE**

**DIMENSIONS AND MOUNTING DATA**

(INCH) SHOWN IN BRACKETS [ ]



**ORDERING INFORMATION**



**Pos. 1**

**DISPLACEMENT CODE**

50	-	50.8cc / 3.1 [in.3/r]
63	-	62.9cc / 3.8 [in.3/r]
80	-	79.8cc / 4.9 [in.3/r]
100	-	99.6cc / 6.1 [in.3/r]
125	-	124.5cc / 7.6 [in.3/r]
160	-	159.6cc / 9.8 [in.3/r]
200	-	199.4cc / 12.2 [in.3/r]
250	-	249.2cc / 15.2 [in.3/r]
315	-	316.5cc / 19.4 [in.3/r]
400	-	399.7cc / 24.4 [in.3/r]

**Pos. 2**

**VERSIONS**

1	-	"Open Center - Non Load Reaction"
2	-	"Open Center - Load Reaction"
4	-	"Open Center - Non Load Reaction"

**Pos. 3**

**RELIEF VALVE PRESSURE SETTINGS, BAR (PS)**

80	-	80 [1160]
100	-	100 [1450]
120	-	120 [1740]
140	-	140 [2030]
160	-	160 [2320]

**Pos. 4**

**CODE**

Omit	-	BSPP G 1/2
GA	-	BSPP G 3/8
U	-	3/4 - 16 UNF "O" Ring
UA	-	9/16-18 UNF "O" Ring
M	-	Metric

**Pos. 5**

**TYPE**

D	-	D Type
E	-	E Type

**Pos. 6**

**DESIGN SERIES**

Omit	-	Factory use only
------	---	------------------



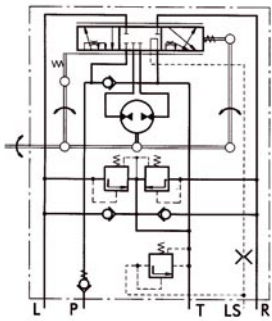
■ **APPLICATION**

For the use of steering low speed vehicles such as fork lifts, tractors, construction equipment, ship rudders, mining and industrial position equipment.

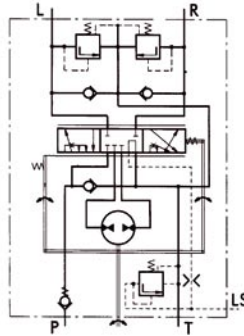
■ **DESCRIPTION OF UNIT NHSUS**

The NHSUS load sensing hydrostatic steering unit is an energy saving unit which is supplied from the pump through its priority valve and is thereby always assure sufficient oil volume supply for fast, soft and reliable operations of the vehicle.

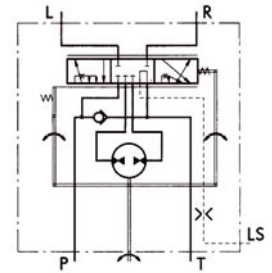
When the steering unit is not activated less then 2 LPM (0,53 GPM) is directed back to tank.



**NHSUS... /5**  
 "CLOSE CENTER"  
 NON-LOAD REACTION  
 LOAD SENSING  
 MANIFOLD TYPE MOUNT



**NHSUS... /5**  
 "CLOSE CENTER"  
 NON-LOAD REACTION  
 LOAD SENSING  
 THREADED PORTS



**NHSUS... /5**  
 "CLOSE CENTER"  
 NON-LOAD REACTION  
 LOAD SENSING  
 THREADED PORTS

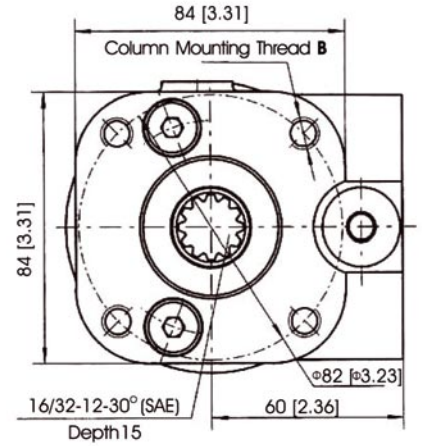
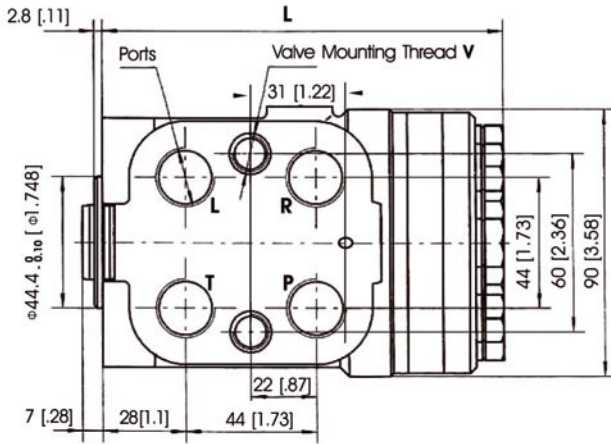
■ **SPECIFICATION**

Parameters	Type										
	NHSU NHSUS 50/5	NHSU NHSUS 63/5	NHSU NHSUS 80/5	NHSU NHSUS 100/5	NHSU NHSUS 125/5	NHSU NHSUS 160/5	NHSU NHSUS 200/5	NHSU NHSUS 250/5	NHSU NHSUS 315/5	NHSU NHSUS 400/5	
Displacement cc/rev (cu.in)	50.8 (3.1)	62.9 (3.8)	79.8 (4.9)	99.6 (6.1)	124.5 (7.6)	159.6 (9.8)	199.4 (12.2)	249.2 (15.2)	316.5 (19.4)	399.7 (24.4)	
Rated Flow l/min (gpm)	5 (1.3)	6 (1.6)	8 (2.1)	9 (2.4)	11 (2.9)	12 (3.2)	17 (4.5)	24 (6.3)	30 (7.9)	40 (10.6)	
Rated Pressure bar (PSI)	160 (2320)										
Relief Valve Pressure Setting bar (PSI)	80 (1160)		100 (1450)		120 (1740)		140 (2030)		160 (2320)		
Shock Valve Pressure Setting bar (PSI)	140 (2030)		160 (2320)		180 (2610)		200 (2900)		220 (3190)		
Max. Cont. Pressure in Line T bar (PSI)	20 (290)										
Max. Torque-Powered Nm (lb.-in.)	5 (44)										
D Type Weight kg (lb)	5.75 (12.68)	5.82 (12.83)	5.89 (12.99)	5.96 (13.14)	6.1 (13.45)	6.3 (13.89)	6.5 (14.33)	6.73 (14.98)	7.1 (15.65)	7.5 (16.53)	
E Type Weight kg (lb)	6.04 (13.31)	6.11 (13.47)	6.18 (13.62)	6.27 (13.82)	6.4 (14.11)	6.6 (14.55)	6.79 (14.97)	7.02 (15.48)	7.39 (16.29)	7.79 (17.17)	
D Type Dimension L mm (in.)	130 (5.12)	132 (5.2)	134 (5.28)	137 (5.39)	140 (5.51)	145 (5.71)	150 (5.91)	156 (6.14)	166 (6.54)	176 (6.93)	
E Type Dimension L mm (in.)	140 (5.51)	142 (5.59)	144 (5.67)	146 (5.75)	149 (5.87)	154 (6.06)	159 (6.26)	165 (6.5)	175 (6.89)	185 (7.28)	

**D TYPE**

**DIMENSIONS AND MOUNTING DATA NHSUS .../5**

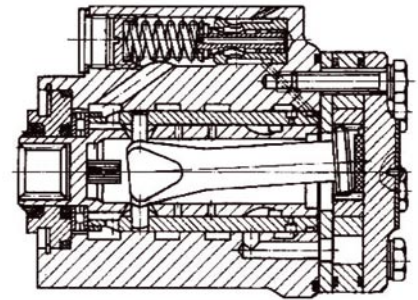
(INCH) SHOWN IN BRACKETS [ ]



**THREAD PORTS**

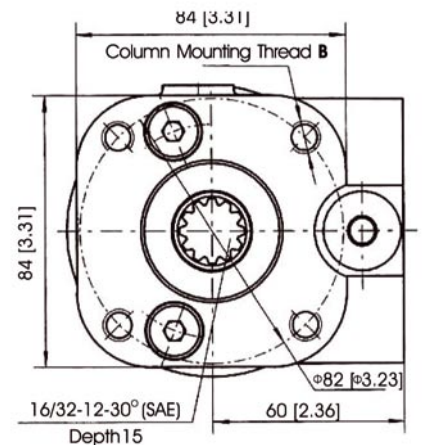
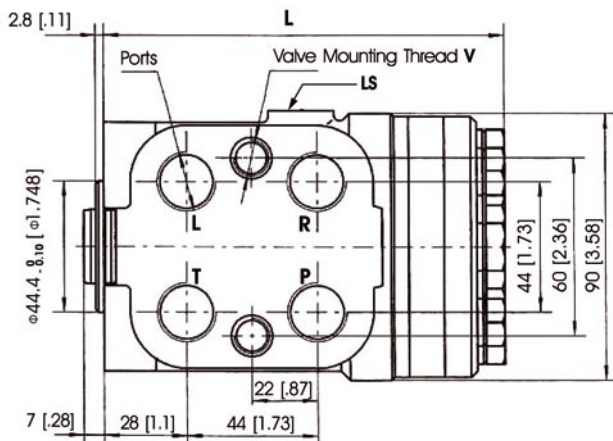
Code	Ports – P, T, R, L Thread	Column Mounting Thread - B	Valve Mounting Thread - V	LS-Port
-	G 1/2 17 mm depth	4 x M10 x 1.5 16 mm depth	M10 x 1 16 mm depth	G 1/4 14mm depth
GA*	G 3/8 17 mm depth	4 x M10 x 1.5 16 mm depth	M10 x 1 16 mm depth	G 1/4 14mm depth
U	3/4 – 16UNF O-ring 17 mm depth	4 x 3/8 – 16UNC 0.63 [16] depth	2 x 3/8 – 24UNF 0.63 [16] depth	7/16 -20UNF 14 [0.55] depth
UA*	9/16 – 18UNF O-ring 17 mm depth	4 x 3/8 – 16UNC 0.63 [16] depth	2 x 3/8 – 24UNF 0.63 [16] depth	7/16 -20UNF 14 [0.55] depth
M	M22 - x 1.5 17 mm depth	2 x M10 x 1.5 16 mm depth	M10 x 1 16 mm depth	G 1/4 14mm depth

These threads are for displacements from HSUS50 to HSUS160 only.



**DIMENSIONS AND MOUNTING DATA NHSUS .../5T**

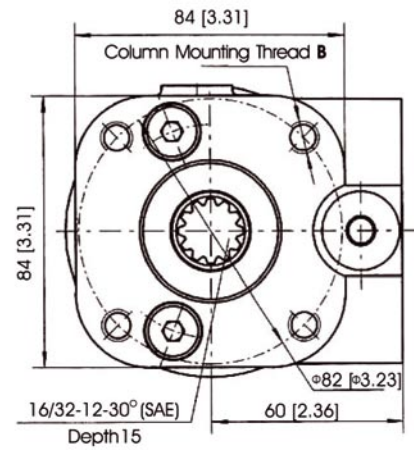
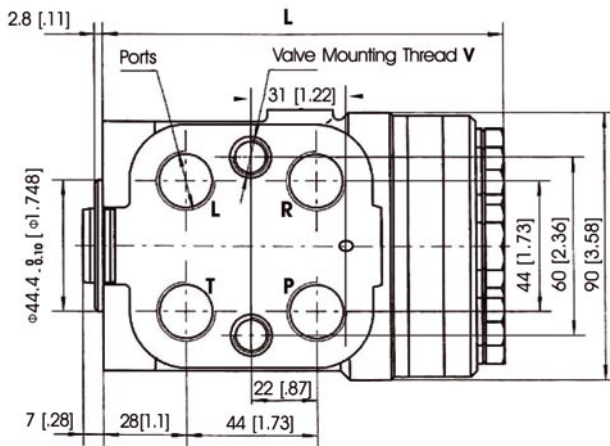
(INCH) SHOWN IN BRACKETS [ ]



**E TYPE**

**DIMENSIONS AND MOUNTING DATA NHSUS .../5**

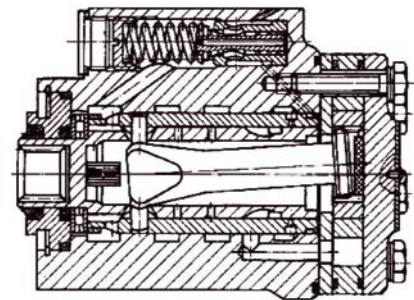
(INCH) SHOWN IN BRACKETS [ ]



**THREAD PORTS**

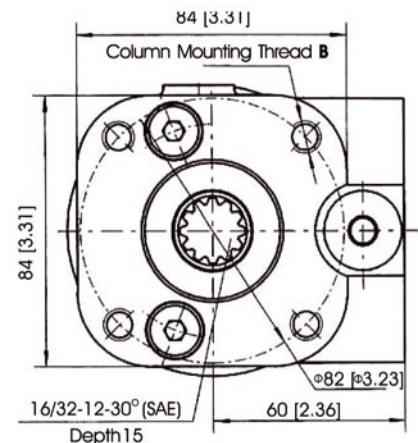
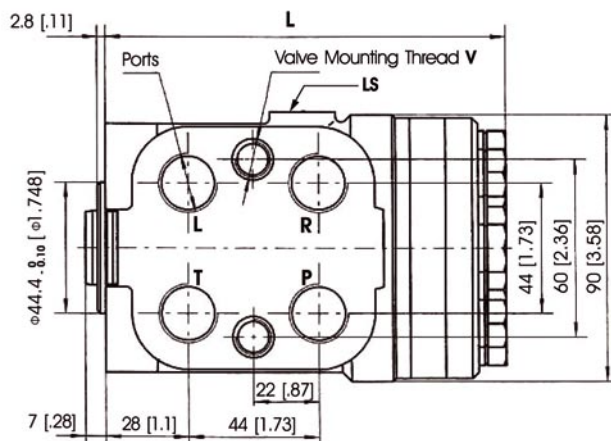
Code	Ports – P, T, R, L Thread	Column Mounting Thread - B	Valve Mounting Thread - V	LS-Port
-	G 1/2 17 mm depth	4 x M10 x 1.5 16 mm depth	M10 x 1 16 mm depth	G 1/4 14mm depth
GA*	G 3/8 17 mm depth	4 x M10 x 1.5 16 mm depth	M10 x 1 16 mm depth	G 1/4 14mm depth
U	3/4 – 16UNF O-ring 17 mm depth	4 x 3/8 – 16UNC 0.63 [16] depth	2 x 3/8 – 24UNF 0.63 [16] depth	7/16 -20UNF 14 [0.55] depth
UA*	9/16 – 18UNF O-ring 17 mm depth	4 x 3/8 – 16UNC 0.63 [16] depth	2 x 3/8 – 24UNF 0.63 [16] depth	7/16 -20UNF 14 [0.55] depth
M	M22 - x 1.5 17 mm depth	2 x M10 x 1.5 16 mm depth	M10 x 1 16 mm depth	G 1/4 14mm depth

These threads are for displacements from HSUS50 to HSUS160 only.



**DIMENSIONS AND MOUNTING DATA NHSUS .../5T**

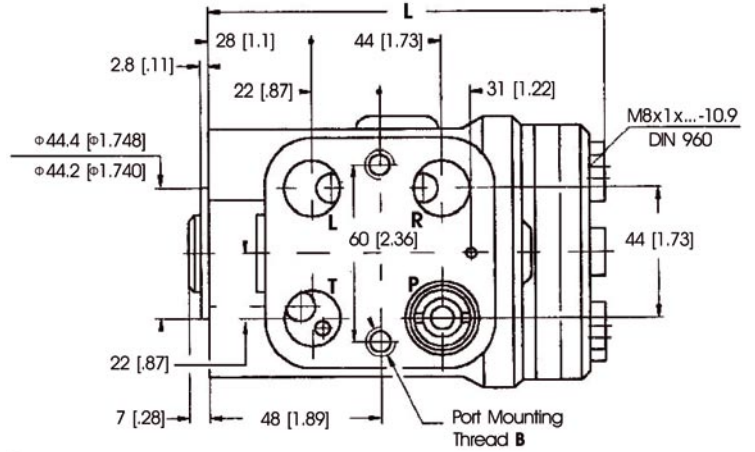
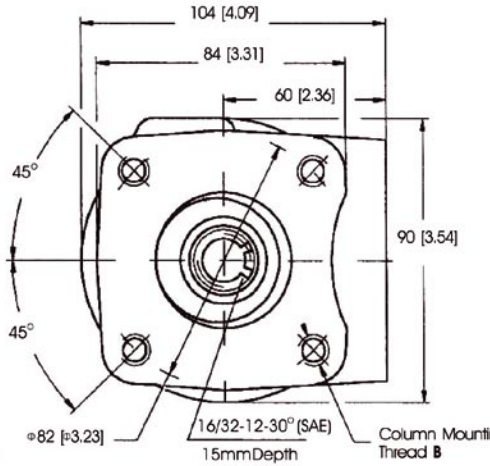
(INCH) SHOWN IN BRACKETS [ ]



**D TYPE**

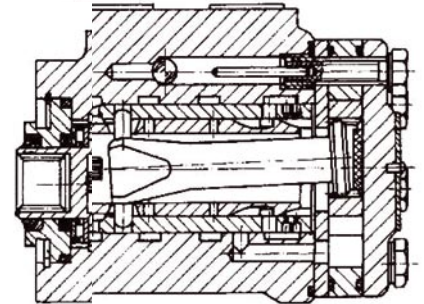
**DIMENSIONS AND MOUNTING DATA NHSUS .../5**

(INCH) SHOWN IN BRACKETS [ ]



**THREAD PORTS**

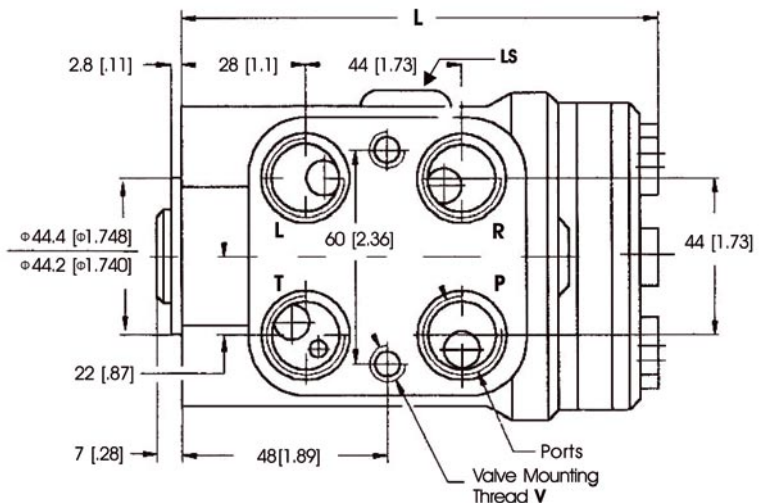
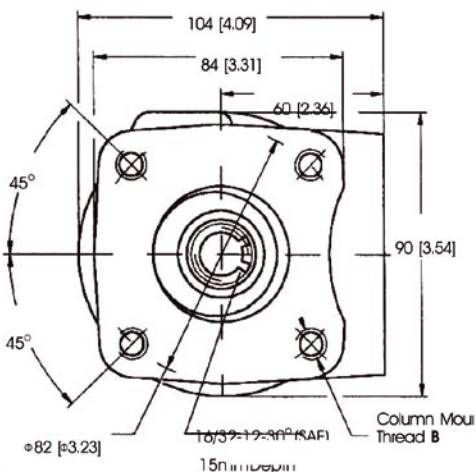
Code	Ports – P, T, R, L Thread	Column Mounting Thread - B	Valve Mounting Thread - V	LS-Port
-	G 1/2 17 mm depth	4 x M10 x 1.5 16 mm depth	M10 x 1 16 mm depth	G 1/4 14mm depth
GA*	G 3/8 17 mm depth	4 x M10 x 1.5 16 mm depth	M10 x 1 16 mm depth	G 1/4 14mm depth
U	3/4 – 16UNF O-ring 17 mm depth	4 x 3/8 – 16UNC 0.63 [16] depth	2 x 3/8 – 24UNF 0.63 [16] depth	7/16 -20UNF 14 [0.55] depth
UA*	9/16 – 18UNF O-ring 17 mm depth	4 x 3/8 – 16UNC 0.63 [16] depth	2 x 3/8 – 24UNF 0.63 [16] depth	7/16 -20UNF 14 [0.55] depth
M	M22 - x 1.5 17 mm depth	2 x M10 x 1.5 16 mm depth	M10 x 1 16 mm depth	G 1/4 14mm depth



\* These threads are for displacements from HSU50 to HSU160 only.

**DIMENSIONS AND MOUNTING DATA NHSUS .../5T**

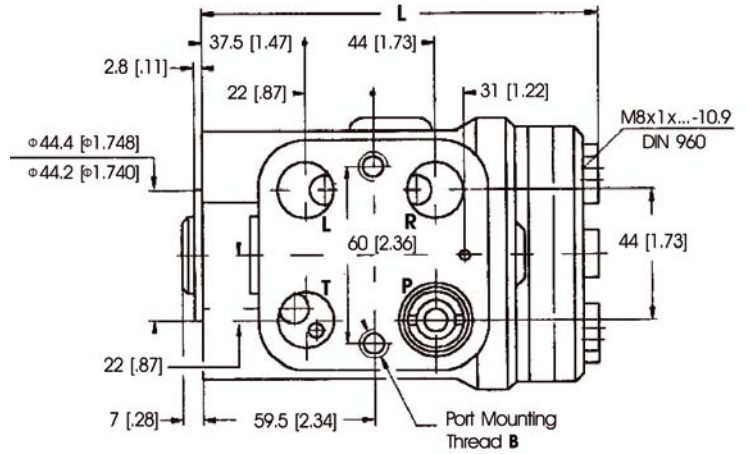
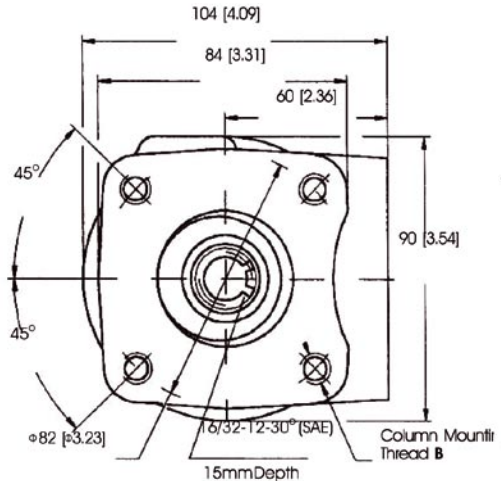
(INCH) SHOWN IN BRACKETS [ ]



**E TYPE**

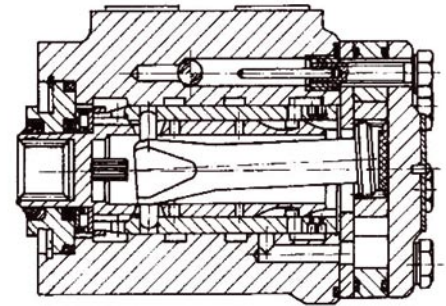
**DIMENSIONS AND MOUNTING DATA NHSUS .../5**

(INCH) SHOWN IN BRACKETS [ ]



**THREAD PORTS**

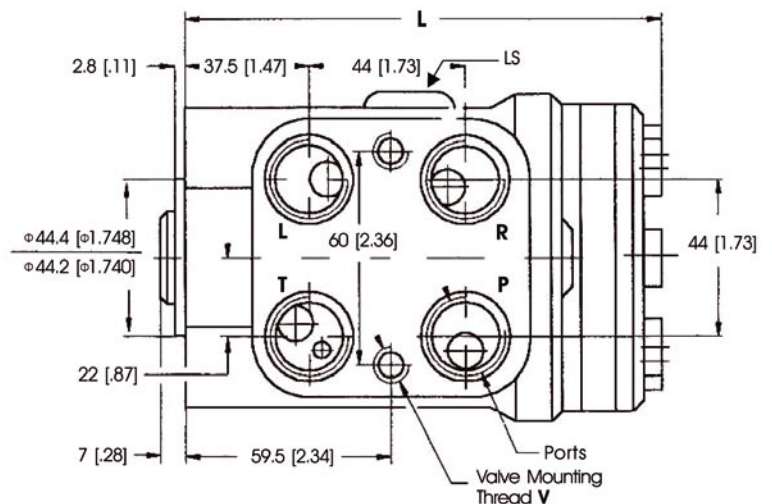
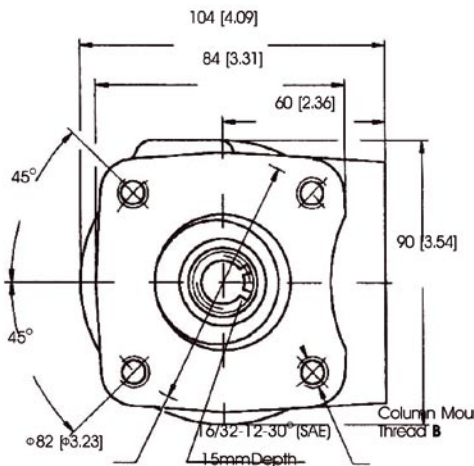
Code	Ports – P, T, R, L Thread	Column Mounting Thread - B	Valve Mounting Thread - V	LS-Port
-	G 1/2 17 mm depth	4 x M10 x 1.5 16 mm depth	M10 x 1 16 mm depth	G 1/4 14mm depth
GA*	G 3/8 17 mm depth	4 x M10 x 1.5 16 mm depth	M10 x 1 16 mm depth	G 1/4 14mm depth
U	3/4 – 16UNF O-ring 17 mm depth	4 x 3/8 – 16UNC 0.63 [16] depth	2 x 3/8 – 24UNF 0.63 [16] depth	7/16 -20UNF 14 [0.55] depth
UA*	9/16 – 18UNF O-ring 17 mm depth	4 x 3/8 – 16UNC 0.63 [16] depth	2 x 3/8 – 24UNF 0.63 [16] depth	7/16 -20UNF 14 [0.55] depth
M	M22 - x 1.5 17 mm depth	2 x M10 x 1.5 16 mm depth	M10 x 1 16 mm depth	G 1/4 14mm depth



\* These threads are for displacements from HSU50 to HSU160 only.

**DIMENSIONS AND MOUNTING DATA NHSUS .../5T**

(INCH) SHOWN IN BRACKETS [ ]



**ORDERING INFORMATION**

	1	2	3	4	5	6
<b>NHSUS</b>		5				

**Pos. 1**

**DISPLACEMENT**

50	-	50.8cc / 3.1 [in.3/r]
63	-	62.9cc / 3.8 [in.3/r]
80	-	79.8cc / 4.9 [in.3/r]
100	-	99.6cc / 6.1 [in.3/r]
125	-	124.5cc / 7.6 [in.3/r]
160	-	159.6cc / 9.8 [in.3/r]
200	-	199.4cc / 12.2 [in.3/r]
250	-	249.2cc / 15.2 [in.3/r]
315	-	316.5cc / 19.4 [in.3/r]
400	-	399.7cc / 24.4 [in.3/r]

**Pos. 2**

**VERSIONS**

5	-	Version 5 "Cloas Cneter - Non Reaction and Load Sensing Outlet"
---	---	---

**Pos. 3**

**PRIORITY VALVES CONNECTION**

Omit	-	Modulary Mounting
T	-	Pipe Mounting

**Pos. 4**

**LS - VALVE PRESSURE SETTINGS, BAR (PS)**

80	-	80 [1160]
100	-	100 [1450]
120	-	120 [1740]
140	-	140 [2030]
160	-	160 [2320]

**Pos. 5**

**PORTS**

Omit	-	BSPP G 1/2
GA	-	BSPP G 3/8
U	-	3/4 - 16 UNF "O" Ring
UA	-	9/16-18 UNF "O" Ring
M	-	Metric

**Pos. 6**

**TYPE**

D	-	D Type
E	-	E Type

**Pos. 7**

**DESIGN SERIES**

Omit	-	Factory use only
------	---	------------------

**ORDERING INFORMATION**



**Pos. 1**

**DISPLACEMENT CODE**

50	-	50.8cc / 3.1 [in.3/r]
63	-	62.9cc / 3.8 [in.3/r]
80	-	79.8cc / 4.9 [in.3/r]
100	-	99.6cc / 6.1 [in.3/r]
125	-	124.5cc / 7.6 [in.3/r]
160	-	159.6cc / 9.8 [in.3/r]
200	-	199.4cc / 12.2 [in.3/r]
250	-	249.2cc / 15.2 [in.3/r]
315	-	316.5cc / 19.4 [in.3/r]
400	-	399.7cc / 24.4 [in.3/r]

**Pos. 2**

**VERSIONS**

5	-	Version 5 "Cloas Cneter - Non Reaction and Load Sensing Outlet"
---	---	---

**Pos. 3**

**PRIORITY VALVES CONNECTION**

Omit	-	Modulary Mounting
T	-	Pipe Mounting

**Pos. 4**

**PORTS**

Omit	-	BSPP G 1/2
GA	-	BSPP G 3/8
U	-	3/4 - 16 UNF "O" Ring
UA	-	9/16-18 UNF "O" Ring
M	-	Metric

**Pos. 5**

**TYPE**

D	-	D Type
E	-	E Type

**Pos. 6**

**DESIGN SERIES**

Omit	-	Factory use only
------	---	------------------

WWW.NIMCO-CONTROLS.COM

# nimco

hydraulic systems

## Nimco Controls

North America & Asia  
Corporate Headquarters  
1500 S. Sylvania Avenue (USA)  
Sturtevant, WI 53177  
Phone: 262-884-0950  
salesusa@nimco.us

## Nimco Controls

Europe  
71-75 Shelton Street  
Covent Garden, London  
WC2H 9JQ United Kingdom  
Phone: +44 20 3772 4540  
saleseurope@nimco.se



- Factory
- Distributor