

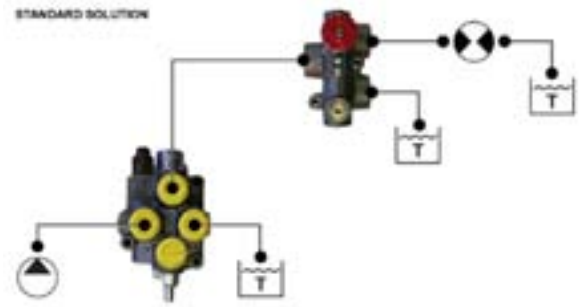


Conveyor Belt Speed Control

A key issue for screening machines is the ability to accurately and independently set the speed of each conveyor belt. The wrong speed ratio will cause the material to pile up inside the screen or bounce off the belts. These speeds must remain constant throughout varying operating conditions.

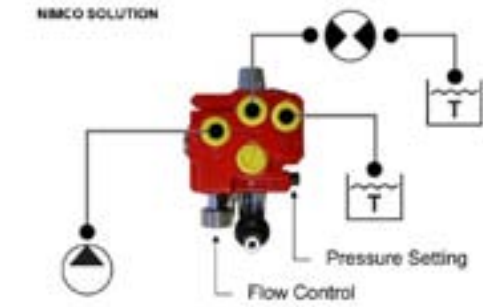
STANDARD SOLUTION

Traditionally, consistent speed is achieved by connecting a valve for speed adjustment to a valve for starting, stopping, and reversing of the conveyor. This requires a fair amount of plumbing space consuming and costly. It also increases pressure drop, resulting in higher fuel consumption, heat generation, and long-term end-user cost.



NIMCO SOLUTION

Nimco designed a valve specifically to drive conveyor belt motors in an open-center circuit. The CV691 control valve combines a pressure-compensated flow control integrated with a directional-control valve in a single, compact unit.



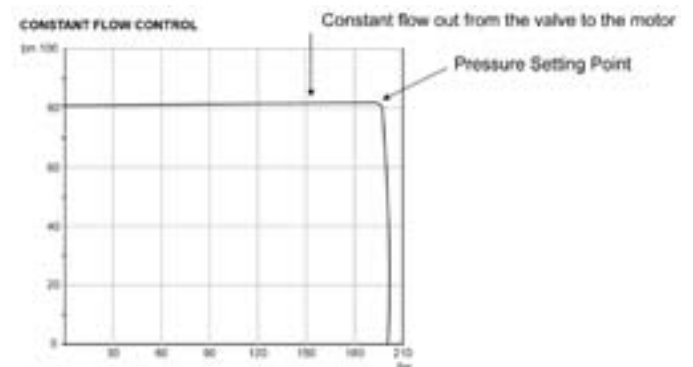
CV691

The CV691 is a very compact valve where the control valve is combined with a pressure-compensated flow control valve in one body. This decreases both cost and size, reducing the number of hoses and fittings for a more compact installation done in less time.



CONSTANT FLOW CONTROL

The CV691 spool gives it a very distinct pressure cutoff point, keeping output flow constant up to the maximum set pressure. This gives constant material delivery throughout varying conditions, saving plumbing, assembly time, and energy consumption.



Learn more about screener control, [download our brochure.](#)



To meet at CONEXPO, call or email:
LARS SANDBERG +46 70 978 3156
TOBY NORD +1 847 226 3262

Dear Customer,

The CV691 can serially connect the first valve is the CV791, equipped with a relief valve to protect from over pressure downstream. When driving two motors with serially connected valves, the highest load pressure determines the power consumption for the whole unit. The only loss from the lower load pressure function is pressure drop through those components. This means you get one function 'free of charge'.



These valves dramatically decrease heat generation and improve overall fuel consumption due to lower internal leakage and better pressure compensation at high loads. Your results: higher material output volumes and overall productivity.

To learn more about applying the CV691 and CV791 into your system, contact your local dealer, a Nimco sales office, or start by downloading our informative brochures below. If attending CONEXPO, be sure to meet with

Lars Sandberg +46 70 978 3156 **Toby Nord +1 847 226 3262**

Thank you for your continued support of Nimco products--we truly appreciate your business.

Sincerely,
Team Nimco

Informative brochures:

Flow Control Valves for Screeners
Screen Call magazine article

[WEBSITE](#) [ABOUT US](#) [TECHNOLOGY](#) [CONTACT US](#) [NEWS](#)

N. America/Asia: T. +1 262 884 0950 F. +1 262 886 1129
Europe Sales: T. + 46 (40) 22 76 00 F. + 46 (40) 22 76 01
Europe Business Office: UK T. + 44 (20) 3772 4540

[SUBSCRIBE to our monthly newsletter](#)